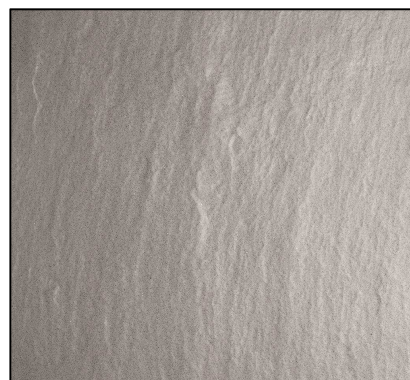


TECHNICAL DATA FOR QUARTZ BASED ENGINEERED STONES

Product:	CALAIS
Brand name:	SM QUARTZ®
Composition:	6 - 8 % Resin, 92 - 94 % Quartz
Pre-consumer recycled:	0 % by weight
Surface finish:	Wave - Brushed
Slabs size (cm):	305x140
Slabs thickness (cm):	2,0 - 3,0



Characteristics	Standard	Value	Notes
Apparent density	EN 14617-1	2375 - 2500 Kg/m ³	
Water absorption	EN 14617-1	≤ 0,10 %	
Flexural strength	EN 14617-2	40 - 60 MPa	
Abrasion resistance	EN 14617-4	25 - 29 mm	
Frost resistance	EN 14617-5	KM _{f25} 0,9 - 1,2	
Thermal shock resistance	EN 14617-6	Δm% ≤ 0,07 %	Test temperature: 70°C
		ΔR _{f,20} % ≤ 25 %	
Impact resistance	EN 14617-9	≥ 3,5 J	For thickness 20 mm, 30 mm
Chemical resistance	EN 14617-10	C4	
Linear thermal expansion coefficient	EN 14617-11	21 - 32 x 10 ⁻⁶ °C ⁻¹	
Dimensional stability	EN 14617-12	Class A (<0,3 mm)	
Electrical resistivity	EN 14617-13	ρ _s ≥ 10 ¹⁰ Ω	Referred to surface
		ρ _v ≥ 10 ⁸ Ω m	Referred to volume
Compression resistance	EN 14617-15	150 - 250 MPa	
Mohs hardness	EN 101	up to 7 Mohs	
Thermal conductivity	EN 12524	1,3 W/(m K)	From tabulated values
Reaction to fire	EN 13501-1	A2fl-s1	